

## MTU-Soo Boasts Area's Newest Ski Facility

What began as a "wild idea", according to MTU-Soo officials, has developed into the Sault's newest ski facility.

Adapting the slopes at the northwest end of the campus for skiing was accomplished by the Athletic Department with the purchase of a tow motor, and the work of students and faculty alike in installing poles and splicing a nylon tow rope to complete the MTU-Soo Ski Area. A warning hut is located on the site.

The area offers a good variety of ski terrain, and is ideally suited for beginners to learn this fast growing sport. However, a series of terraces on the hill also makes for interesting skiing for advanced alpinists.

**PROOF OF** this was the free Christmas vacation ski school, held at the area, which attracted 172 local youngsters in classes ranging from novice to parallel skiing.

The hill will also be used by the MTU-Soo Varsity Ski Team and the Sault High School Ski Team for practice during the week this winter.

While the area is open to the public, it provides ideal on-campus recreation for Sault Branch students. Day-time activity on the slopes may be continued into the evening as the possibility of installing lights for night skiing is being investigated.

A nominal daily tow fee is charged, however season tickets have proved popular with many families. A single student or adult ticket may be purchased, and a low rate for entire families has been established. Season passes may be obtained at the Sault Branch Athletic Department or at the Treasurer's office.

**SITUATED AS IT IS** on a hill overlooking the International Bridge and Interstate Highway 75, the MTU-Soo Ski Area may well become an attraction for outside skiers as they enter and leave Sault Ste. Marie.

### CUSSA Sponsors Racing Program

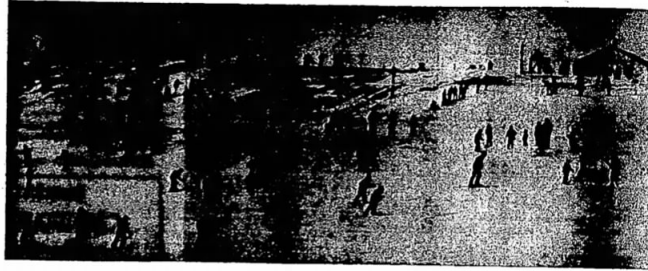
The ski racing program in Michigan used to consist of several hundred youngsters and interested, frozen parents.

But now it's moving with the speed of Toni Sailer on a downhill course. And a senior program is being instituted under the auspices of the Central United States Ski Association, a division of the United States Ski Association covering the Midwest.

**CUSSA EXECUTIVE** Secretary Tom Jost, of Traverse City, had worked closely with Michigan High School Athletic Association Director Charles Forsythe to institute a high school racing division.

The relationship is a ticklish one — the high schools jealously guard their athletics and don't want them administered by anyone; the United States Ski Association doesn't want anyone giving it orders.

Fortunately, Michigan prep skiers have a national champion to compete against — Greg Schwartz of Cadillac. Schwartz formerly represented the Ironquois Mountain, located west of Brimley, in national competition. Greg's father, Don, formerly managed Ironquois Mountain.



**SKI THE SNOW COUNTRY ...  
SKI THE SAULT!**



Here's the place for real wintertime fun—matchless ski areas and a host of other exciting winter sports! Enjoy them all—and remember, Reddy Kilowatt will still be on the job . . . making possible so many of your activities . . . serving you in so many ways.

**EDISON SAULT ELECTRIC CO.**

SERVING MICHIGAN'S EASTERN UPPER PENINSULA