

Hit the slopes, ride the hills, and

The Quad-Cities hasn't exactly been a "winter wonderland" this year, but there's still snow on the ski slopes and ice on the ponds. So, there's no need to sit around the house like a hibernating house potato, get on out and have some fun.

Winter Sports

Here are some winter sport locations where snow skiing is available. It's a good idea to call ahead to see how snow conditions are at each particular area.

ILLINOIS

Eagle Ridge Inn, Galena Territory; (815) 777-2444.

Chestnut Mountain Resort, Galena, toll-free in Illinois (800) 892-0738, toll-free from other locations (800) 435-2914.

Four Lakes Village, Lyle, (25 miles from Chicago) (312) 964-2550.

Holiday Park Ingleside, (48 miles north of Chicago) (312) 546-8222.

Snowstar Ski Resort, 9500 126th St. West, Taylor Ridge, near Andalusia; 798-2666. Nine ski runs.

Wagon Wheel Resort, Rockton, (815) 824-8711.

IOWA

Mount Crescent, 6 miles north of Council Bluffs, (712) 545-3850.

Dayton Del Ski Area, Dayton, (515) 547-2410.

Fun Valley, Montezuma, (515) 623-3456.

Nov-Ski Runs, Decorah, (319) 382-4158.

Oak Highland, Waverly, (319) 352-3912.

Silver Creek Ski Area, at Humboldt, (515) 333-3329.

Sundown, Dubuque, (800) 634-5911.

Sunset Ski Area, Cherokee, (712) 228-4190.

WISCONSIN

Alpine Valley, East Troy, (414) 642-7374.

Cascade Mountain, Portage, (608) 742-5588.

Devil's Head, Merrimac, (608) 453-2251.

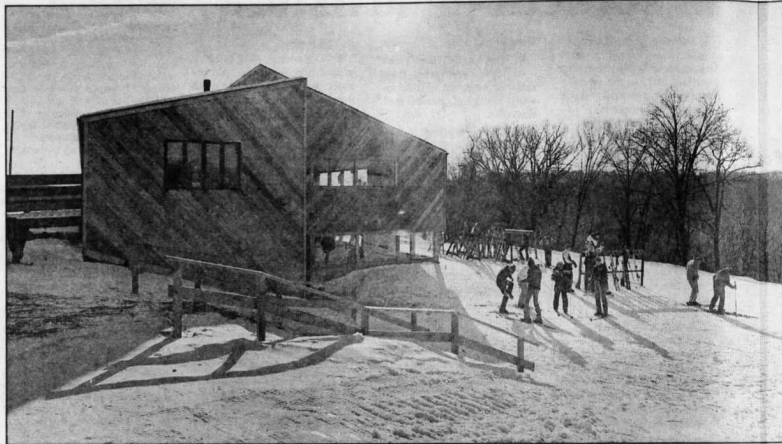
Majestic, Lake Geneva, (414) 246-6128.

Mount La Crosse, La Crosse, (608) 788-0044.

Rib Mountain, Wausau, (715) 845-2846.

Springgreen, Spring Green, (608) 588-2571. (Cross-country only).

ON THE COVER: Steve Duffy, Davenport, is ready for a full winter of fun in the snow and on the ice. Equipment supplied by Chalet Ski Patio and Kunkels Sports Center. (QUAD-CITY TIMES photo by Greg Boll)



A bustling ski resort

The Quad-City area offers some elegant places to hit the slopes



Cross-country skiers

Cross-country skiing's popularity soars

Local ski shops say cross-country skiing may be the fastest growing winter sport because it offers people a way to get out and enjoy the winter without having to pay for lift tickets, etc.

Here are some favorite local spots for cross-country skiing, but officials ask that skiers wait until there's at least four inches of snow before hitting the trails:

DAVENPORT — There's plenty of cross-country skiing available at

Credit Island, Emeis and Duck Creek Golf Courses. Credit Island offers a nice, flat terrain, while Emeis features lots of long gradual terrain. Duck Creek is the most popular because of the mix of terrain and natural beauty.

BETTENDORF — Palmer Hills Golf Course offers a challenging terrain for cross-country skiers of all abilities.

SCOTT COUNTY — The cross-country trail at Scott County Park, Long Grove,

is open from 7 a.m. to 10 p.m. daily. Warming house available.

CLINTON — Eagle Point Park, Clinton, Iowa. Three groomed trails of varying difficulty overlooking the Mississippi River. Open from dawn to dark.

MOLINE — Green Valley Sports Complex. **HAMPTON** — Illinewek Forest Preserve.

ROCK ISLAND — Cross-country allowed at Saukiew Golf Course, weather permitting. Signs will be posted.

By Jim Renkes
QUAD-CITY TIMES

The Midwest isn't generally considered to be an international hotbed of skiing, but there's a lot more to offer within a few hours drive of the Quad-Cities than most people think.

More and more skiers are realizing that you don't have to go all the way to Aspen in order to have an enjoyable — and cheaper — weekend of skiing. At several resorts near the Quad-Cities an 11-hour day of skiing (including lift ticket, skis, boots and bindings) can cost as little as \$30.

You can ski as close as Snowstar or make the scenic drive to such places as Chestnut Mountain in Galena, Ill., and Mount LaCrosse, LaCrosse, Wisc. Here's a quick look at what the resorts offer and their rates:

CHESTNUT — Chestnut Mountain in Galena, Ill., now has 17 ski slopes with the maximum length of 5,300 feet and a vertical drop of 475 feet. The Three chairlifts include a new quad-lift that seats four skiers.

Adult cost for one-day chair lift ticket is \$21 on

Saturdays, Sundays and holidays, \$16 Monday through Fridays. Equipment rental for adults is \$15.

Night skiing (lighted from 4:30 to 10 p.m.) is \$13 for a lift ticket and \$11 for ski rental.

For reservations call 1-800-397-1320. For ski reports call 1-800-798-0098.

SUNDOWN — Sundown Ski Resort in Dubuque, Iowa, has 17 ski runs will four chair lifts. There's a maximum length of one-half mile and a vertical drop of 475 feet.

Adult one-day lift tickets are \$19 on weekends and holidays, and \$15 Mondays through Fridays. Equipment rental for adults is \$16 per day. Night skiing lift ticket is \$12, from 4 to 10 p.m.

For more information call 1-800-397-6676.

SNOWSTAR — Snowstar Ski Area is the newest of the area ski slopes and also the closest. There are eight runs at the Andalusia ski area, with a maximum length of one-quarter mile and a vertical drop of 228 feet, serviced by two chair lifts. An adult one-day lift ticket is \$15 on weekends

and holidays and \$8 Mondays through Fridays and rental is \$14. Lift tickets for night skiing (4 to 10 p.m.) is \$7 and \$11 for rental.

Snowboard rental is \$15 per day. For more information call 309-798-2666.

MOUNT LACROSSE — Mount Lacrosse Ski Resort in LaCrosse, Wisc., has 17 runs with a one-mile maximum length and a 516-foot vertical drop serviced by three chair lifts.

An adult one-day ticket is \$20 on weekends and holidays, \$16 Mondays through Fridays. A two-day lift ticket for Saturday and Sunday is \$37. Ski rental is \$15 on weekends, \$14 weekdays and \$11 at night.

For more information call 608-788-0044.

MOUNT CAMDEN — Camden Park, Milan has one 350-foot "bunny slope" for beginners and a warming house with fireplace. The hill is divided into skiing and sledding areas.

The cost is \$2.50 for rope tow and \$10 for rop tow and rental. For more information call 787-8533.