

# Ontario's 1967 ski facilities the best ever

By BOB MEYER

Ontario's 1967 ski season promises to be the best ever, if one takes a look at the facilities being offered in ski areas across the province.

Skiers this year will be able to attend winter Centennial events while enjoying improved ski facilities at their favorite locations.

A survey taken by the Ontario Department of Tourism and Information shows new installations completed this year, including one double chairlift, 27 rope tows, seven chalets, five new ski areas and four areas adding night skiing.

Ontario now has 115 active skiing areas plus some 15 private ski clubs with their own facilities. A total of 17 chairlifts, 68 T-Bars, 22 poma lifts, three J-Bars and 26 areas with snowmaking equipment will be available this season. Nearly all developments have club chalets with coffee bars and many offer other facilities such as accommodations, ski rentals, professional instruction, night skiing, tobogganing, sleigh riding, skating, dancing and after ski entertainment.

A summary by ski regions across Ontario shows the following facilities ready for the season.

**Northwestern Ontario — Area One** — The Lakehead's Mount McKay (Fort William Ski Club) is completing a new intermediate run which will be over 1,000 feet long and serviced by a T-Bar or poma lift. The double chairlift and snowmaking equipment will be in operation.

Mount Baldy (Port Arthur Ski Club) will have their double chairlift open for service.

Loch Lomand Ski Area, has added a new T-Bar to their uphill facilities and widened the intermediate and advance slopes. New lodge facilities will also be added.

Little Norway has completed a program of widening all runs, especially a long beginner's slope.

North Central Airlines in cooperation with the Lakehead Convention Bureau and the ski

areas have initiated new ski-week and weekend package plans.

**NORTH EASTERN ONTARIO — AREA TWO** — T-Bars will be operating at Sault Ste. Marie's Buttermilk Hill and Searchmount Valley, also at Sudbury's Nordic Hills, Timmins Kamiskatia Mountain, Virginiatown's Raven Mountain and the Kirkland Lake, North Bay and Onaping Ski clubs.

A poma lift will be available at Hanleybury's St. Bernard Ski Village, the Sault Ski Club Searchmount Valley.

An additional rope tow has been installed at the Elliot Lake and Espanola Ski Clubs. A new ski club with chalet and two rope tows has opened at Azilda near Sudbury and the new Mount Wawa Ski Resort has installed a double chairlift and chalet at Wawa.

**NORTH CENTRAL ONTARIO — AREA THREE** — Huntsville's Hidden Valley has enlarged its chalet by four times, giving it an entertainment capacity of 2,000 persons. After-ski dancing on the weekends will be featured.

All slopes will have snowmaking equipment and the two double chairlifts, T-Bar and rope tow are in service.

T-Bars will be operating daily at Rainbow Ridge, Muskoka Sands, Limberlost Lodge, Sir Sam's Inn and daily poma lift service at Britannia Hotel, Tally-Ho Winter Park and Hotel Bernard.

**CENTRAL ONTARIO — AREA FOUR** — In central Ontario, snowmaking equipment has been installed at Snow Valley Resorts near Barrie.

Snowmaking equipment, installed some years ago, will also be used in Mansfield Skiways, Collingwood's Blue Mountain Winter Park, Georgian Peaks Resort, Talisman Ski Resort, Owen Sound's Bay Motor Inn Village and at Orangeville's Hockey Valley.

Chairlifts will be operating at Blue Mountain, Talisman, Bay Motor Inn and Georgian Peaks with T-Bars at Mansfield Skiways, Mount St. Louis, Snow Valley, Horseshoe

Bay, Alpine Ski Club, Blue Mountain, Craigleith, Beaver Valley, Talisman, Old Smokey, Cedar Springs, Twin Hearths, Valley Schus, Bay Motor Inn and Georgian Peaks.

A new ski area has opened near Alliston called the Loretto Ski Resort will have a T-Bar, club chalet and skating rink.

**SOUTH CENTRAL ONTARIO — AREA FIVE** — In this southern metropolitan part of Ontario, snowmaking equipment will be in operation at nine ski areas, including Cedar Springs at Burlington, Chedoke Winter Park at Hamilton, Honey Pot Ski Valley at Maple, Glen Eden Ski Club at Milton, the Oshawa Ski Club, the Bethany Ski Club and in

the Toronto vicinity at Don Valley Forest Valley and Rouge Valley.

T-Bars will be in use at Bethany Cedar Springs, Chedoke, Honey Pot, Oshawa Rouge, Devil's Elbow and poma lifts at Honey Pot and Don Valley.

The new Palisades Country Club will be opening five miles east of Uxbridge with a tow rope, club chalet, dining room and facilities for tobogganing and skating.

Also new this year is the Fonthill Ski Centre near Welland with three rope tows and a chalet.

**SOUTHEASTERN ONTARIO — AREA SIX** — In Southeastern Ontario, the Camp Fortune Ski Camp north of Ottawa will be opening the

season with their double chairlift, two T-Bars, two pomas, a J-Bar and snowmaking equipment. A new area serviced from Ottawa is opening just 60 miles north of the Capital in Quebec called Mont Ste Marie. A double chairlift, four miles of downhill trails, snowmaking equipment and ski lodge will be featured.

A T-Bar and snowmaking equipment will also be ready at Ottawa's Carling Park Ski Area and Napanee's Nacona Skill Hill.

Near Pembroke, Alice Hill Park, will have a T-Bar operating.

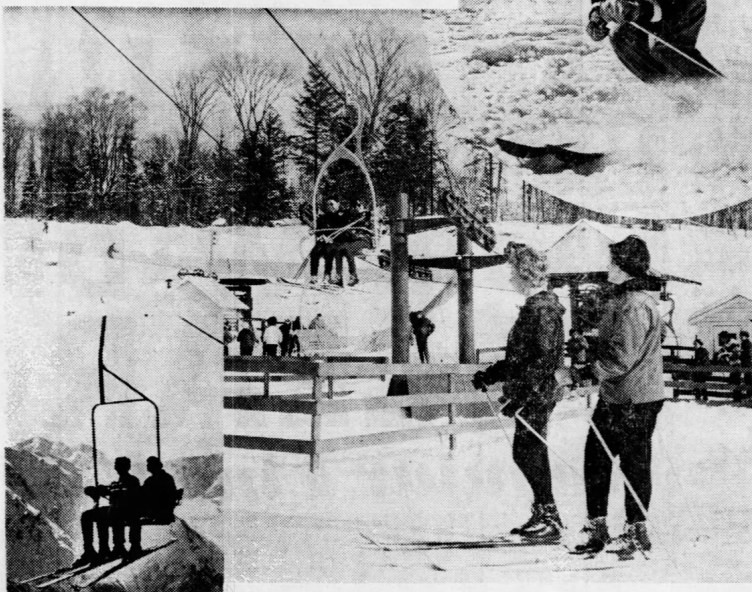
The new Rideau Ski Club, southwest of Smith Falls is still under development but will be ready with two rope tows and a chalet.

**SOUTHEASTERN ONTARIO — AREA SEVEN** — Hide-A-Way in Shakespeare

country has increased the number of rope tows to four. Snowmaking equipment will be in operation again at Grand Bend's Pinery Provincial Park, Kitchener's Chicopee Ski Club, London's Ski Club and Thamesford's Skee-Hi. The Woodstock Ski Club, has added equipment rentals. The new Corwin Ski Slopes is under development eight miles southeast of Guelph.

Equipment reports are near perfect, and according to the recent blizzard, Old Man Winter also plans on enjoying the facilities. Skiing should be in full swing by mid November in nearly all areas.

Many roads, although snowcovered, will lead north this winter to dozens of well equipped ski lodges. Interest in the sport has increased over the past five years, by at least 80 per cent, probably due to the improved conditions at most lodges, snow-making equipment, better transportation and more leisure time. According to the weatherman, conditions are predicted to be fairly good this winter. And thanks to the snow making equipment, all that is really needed is cold weather so that artificial snow can be made. In the western part of Canada skiers on the lift shown below, are already enjoying snowcapped mountains as their trails.



## Method main difference in catching winter fish

What fish can you expect to catch during winter?

To those who actually get out and try, the answer is, "the same species you caught last summer."

While certain fish are considered prime fare on the cold weather menu, there are

species comes into play at this period of year.

However, the big difference is noticed in the response of fish. Spectacular fighters under summer conditions often become quite sluggish in frigid waters. Bass, in particular, exist in such a state of